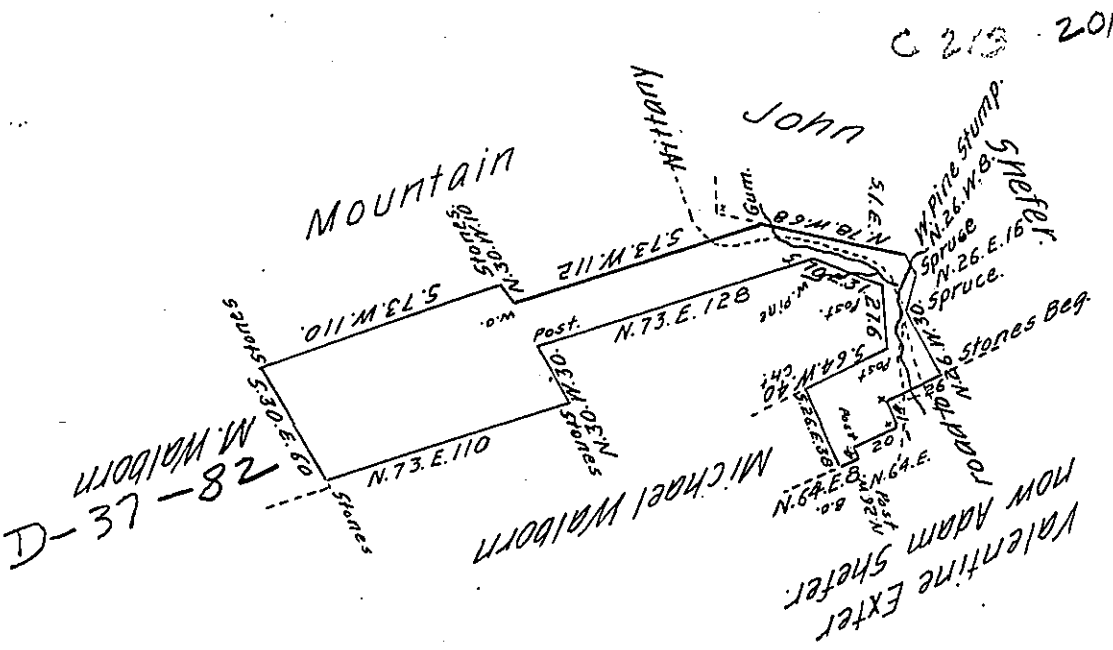


Note, This tract of land is included in the Mountain Surveys, but not having a Correct Draft of them I cannot shew the interfering lines



Courses & distances of this Surrey, Beginning at Stones.

- N 26 W 30 Spruce.
- N 26 E 16 Spruce.
- N 26 W 8 W. pine Stump.
- N 78 W 68 Gum.
- 5 73 W 112 W.O.
- N. 30 W 10 Stones.
- 5 73 W 110 Stones
- 5 30 E 60 Stones
- N 73 E 110 Stones.
- N 30 W 30 Post
- N 73 E. 128 W. pine
- 5 70 E 31 Post
- 5 1 E 27.6 Post
- 5.64 W 40 Ch<sup>t</sup>
- 5 26 E 38 B.O.
- N 64 E 8 Post
- N 26 W 4 Post
- N 64 E 20 Post
- N 26 W 17 Post
- N 64 E 26 to the Beg.

The Draught of a tract of land Situate in Brush Valley, Miles Township, Centre Courty Containing Sixty five Acres forty two perches and Allowance of Six per Cent for roads &c. Surveyed the 5<sup>th</sup> day of April 1815, in pursuance of a warrant granted to Barnhart Haisel dated the 2<sup>nd</sup> day of February ~~1816~~ 1815

W<sup>m</sup> Kerr, D. S.

To Richard T. Leech, Esquire  
Surveyor General of Pennsylvania.

IN TESTIMONY that the above is a copy of the original remaining on file in the Department of Internal Affairs of Pennsylvania, made conformably to an Act of Assembly approved the 16th day of February, 1833, I have hereunto set my Hand and caused the Seal of said Department to be affixed at Harrisburg, this thirtieth day of March 1905.

*James P. Pennington*  
Secretary of Internal Affairs.